

Hooks & Fittings for shock cords

p.1 Flat bungee cords fitting double wire hooks



p.2 Classic and double wire reverse hooks



p.3 Auto locking T-bar swivel hooks



p.4 Auto locking bungee hooks



p.5 Easy fix hooks



p.6 Screw-on hooks



p.7 Bungee cord steel clamps and hog rings



Flat bungee cords fitting double wire hooks

Features and benefits

- One size hook fits 11, 16 and 22 mm wide flat elastic tapes
- Double wire hooks for higher strength
- Rounded hook ends reduce the risk of damage
- Flat shape hook for easy fastening
- To be assembled with a metal ring using the clamp pincer

Technical specifications

- Black plastic coated metal hooks
- Tested to support 500N (~50kgF)
- Carton format: **B** = max. 40 cartons per Euro pallet

Stock range and packaging

Width	Length	Colour	Units/bag	Units/carton	Reference
All size	61 mm	Black	100	1000 / B	W0022



Classic heavy duty steel hook

Features and benefits

- For shock cords of 6, 8, 9 and 10mm diameter
- Highly resistant steel plastic-coated hook
- Available in 10 and 100 units per bag

Technical specifications

- Steel hook with plastic coating
- 6 mm cord: Tested to support 250N (~25kgF)
- 8 mm cord: Tested to support 400N (~40kgF)
- 10 mm cord: Tested to support 450N (~45kgF)
- Carton format: **A** = max. 30 cartons per Euro pallet

Stock range and packaging

Cord dia.	Colour	Units/bag	Units/carton	Reference
6 mm	Black	10	1000 /A	W0006/10
6 mm	Black	100	1000 /A	W0006
8 mm	Black	10	800 /A	W0008/10
8 mm	Black	100	800 /A	W0008
9 & 10 mm	Black	10	600 /A	W0010/10
9 & 10 mm	Black	100	600 /A	W0010



Double wire reverse hooks

Features and benefits

- For shock cords of 8 mm diameter
- Double wire hooks for higher strength
- The reverse shape allows more space to anchor the hooks
- Rounded hook end reduces risk of damage

Technical specifications

- Black plastic coated metal hooks
- 8 mm cord: Tested to support 800N (~80kgF)
- Carton format: **A** = max. 30 cartons per Euro pallet

Stock range and packaging

Cord dia.	Colour	Units/bag	Units/carton	Reference
8 mm	Black	100	800 /A	W0008RH



Auto locking T-bar swivel hooks

Features and benefits

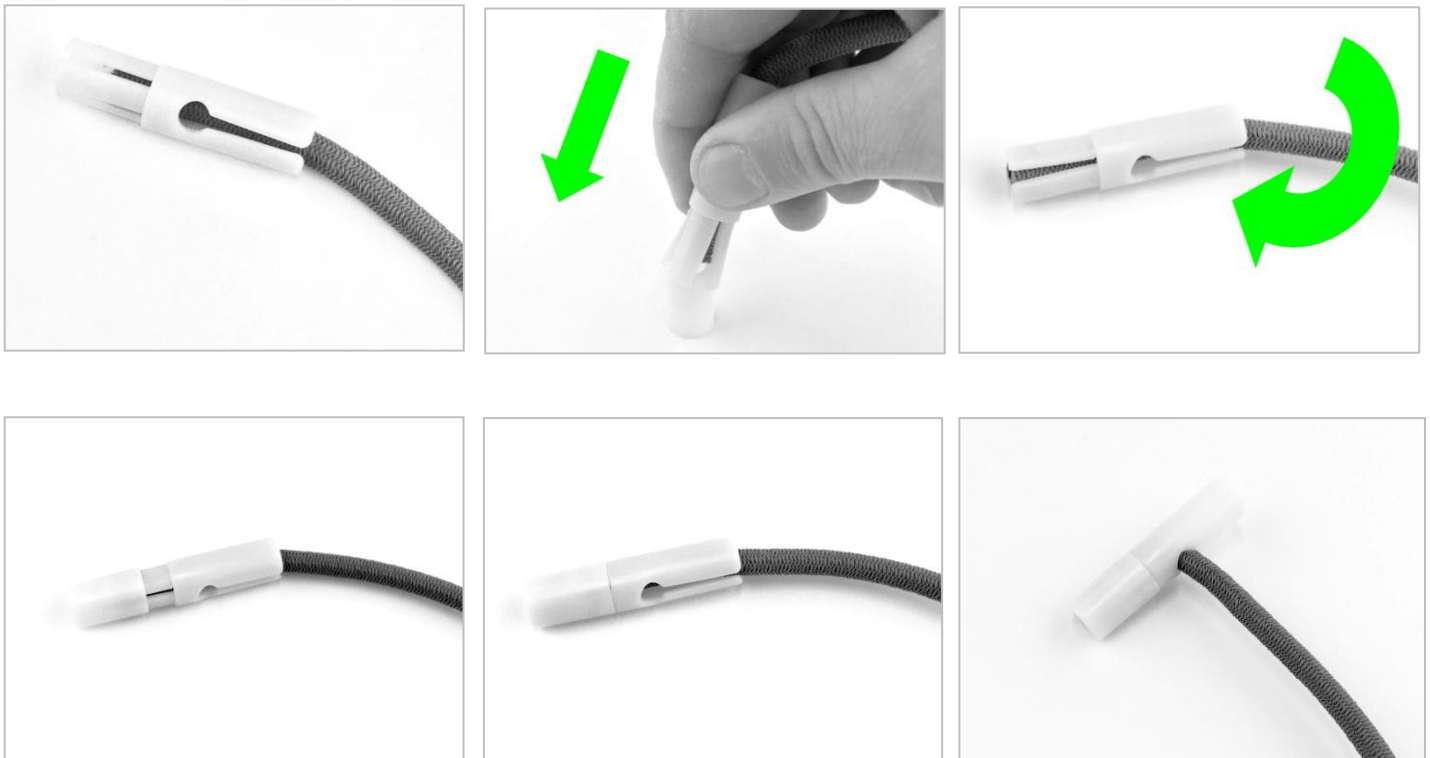
- Designed for use with 8 mm Monoflex™ elastic cables
- Quick and easy to assemble to the length you require
- Use the ring to open the grips when inserting the cord
- Re-useable
- No tools required

Technical specifications

- Moulded nylon
- 60 mm length / 15 mm diameter
- Tested to 350N (~35kgF)
- Carton format: **E** = max. 80 cartons per Euro pallet

Stock range and packaging

Cord dia.	Colour	Units/bag	Units/carton	Reference
8 mm	White	100	500 /E	W0087



Auto locking bungee hooks

Features and benefits

- Designed for use with 8 mm Monoflex™ elastic cables
- Quick and easy assembly
- Security lock
- Easily reuseable
- No tools required
- Available in 10 and 100 units per bag

Technical specifications

- Moulded nylon ultra resistant
- Tested to 450N (~45kgF)
- Carton format: **A** = max. 30 cartons per Euro pallet

Stock range and packaging

Cord dia.	Colour	Units/bag	Units/carton	Reference
8 mm	Black	10	1000 /A	W0088/10
8 mm	Black	100	1000 /A	W0088



Easy fix hook

Features and benefits

- One size hook for 8, 9 and 10 mm diameter elastic cable
- Security lock
- Easy to assemble and adjust to the required length
- Easily reusable
- No tools required
- Available in 10 and 100 units per bag

Technical specifications

- Moulded nylon ultra resistant
- 8 mm cord: Tested to 450N (~45kgF)
- 10 mm cord: Tested to 600N (~60kgF)
- Carton format: **A** =max. 30 cartons per Euro pallet

Stock range and packaging

Cord dia.	Colour	Units/bag	Units/carton	Reference
8, 9, 10 mm	Black	10	1000 /A	W0089/10
8, 9, 10 mm	Black	100	1000 /A	W0089



Screw-on hooks

Features and benefits

- Designed for use with 6 & 8 mm Monoflex™ elastic cables
- Security lock
- The screw on hook requires a 17 mm spanner
- Application can be automated
(contact us for more information)

Technical specifications

- Moulded nylon ultra resistant
- Tested 400N (~40kgF)
- Carton format: **A** = max. 30 cartons per Euro pallet

Stock range and packaging

Cord dia.	Colour	Units/bag	Units/carton	Reference
6 & 8 mm	Black	100	1000 /A	W0090



Bungee cord hog rings

Technical specifications

Steel plated clamps

6 mm cord: Tested to 200N (~20kgF)

8, 9 and 10 mm cord: Tested to 300N (~30kgF)

Carton format: **D** = max. 48 cartons per Euro pallet

Stock range and packaging

Cord dia.	Material	Units/bag	Units/carton	Reference
6 mm	Steel	100	5000 / D	W1001
8, 9, 10 mm	Steel	100	5000 / D	W1002



Bungee cord steel rings

Technical specifications

Steel plated rings

6 mm cord: Tested to 450N (~45kgF)

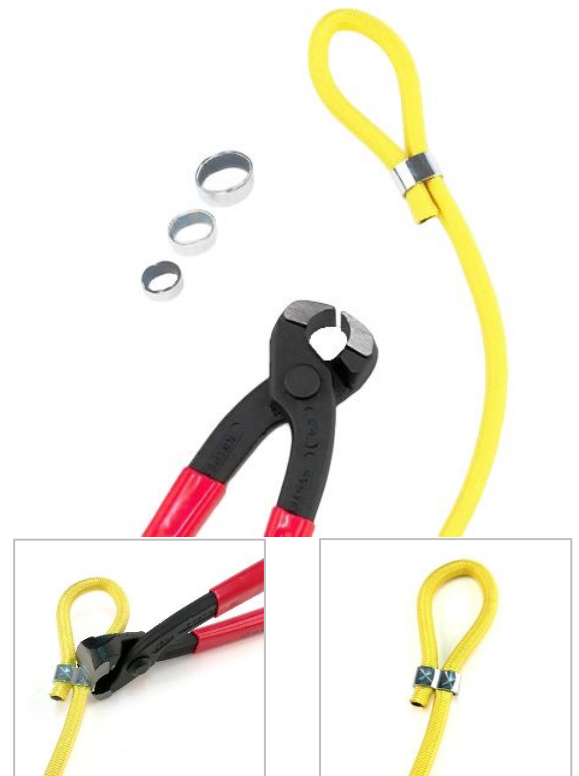
8 mm cord: Tested to 550N (~55kgF)

10 mm cord: Tested to 550N (~55kgF)

Carton format: **E** = max. 80 cartons per Euro pallet

Stock range and packaging

Cord dia.	Material	Units/bag	Units/carton	Reference
6 mm	Steel	100	2000 / E	W1006
6 mm	Steel	10	2000 / E	W1006/10
8 mm	Steel	100	2000 / E	W1008
8 mm	Steel	10	2000 / E	W1008/10
9 & 10 mm	Steel	100	1000 / E	W1010
9 & 10 mm	Steel	10	1000 / E	W1010/10



Clamp pincer for steel rings

No damage to the press points on the rings for an optimum result



You have looked at our range but you have not found the product you were looking for?

Whilst we try to keep in stock a large enough range to suit most needs, we also manufacture specially to answer your specific requirements as to physical properties, colour, packaging or dimensions. To respond most precisely to your requests, we have laboratory equipment that will allow us to analyze your samples with accuracy.

Company details

Nico srl. _ Rue de Coquiamont 7-9 _ Industrial zone _ 1360 Thorembais-les-Béguines _ Belgium _ VAT: BE0428984676